

TRUE BLUE

ENDS 31ST AUGUST 2022



WIN

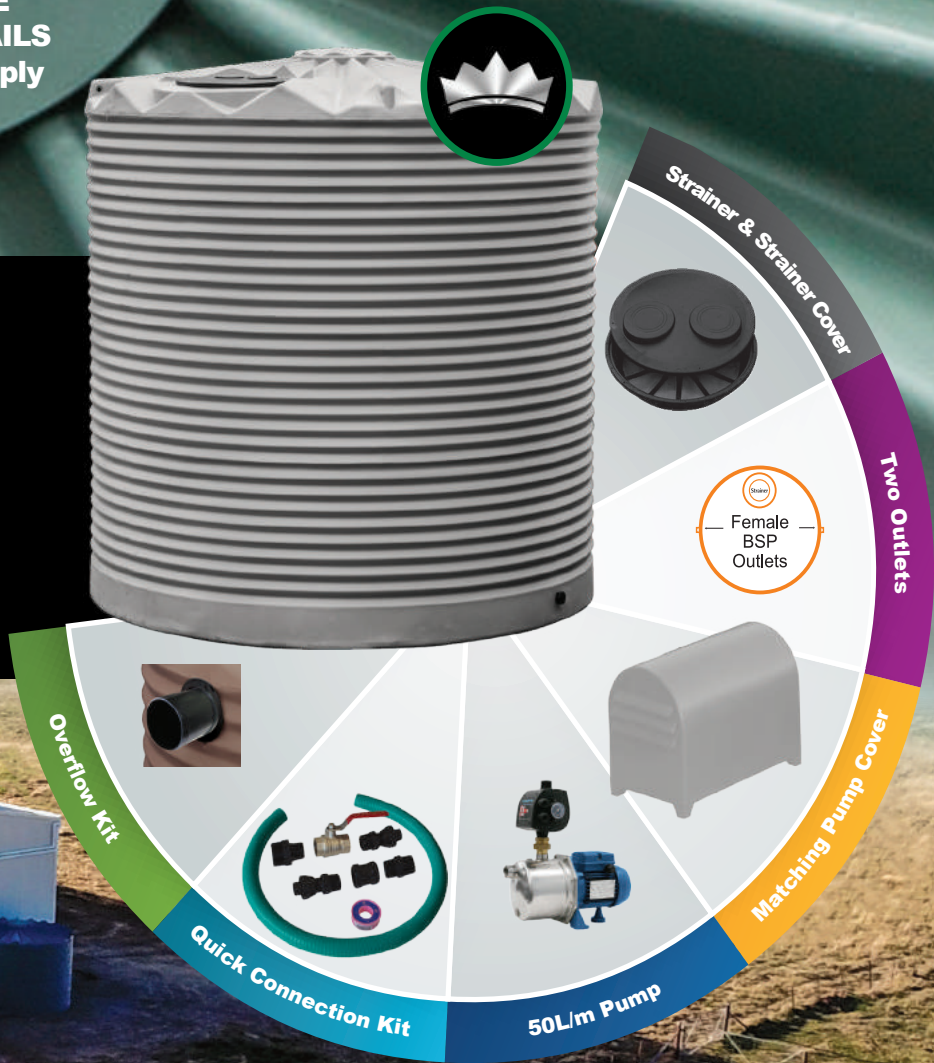
BACK YOUR TANK!

REFER TO TRUE BLUE
PAGE 2 FOR MORE DETAILS
*Terms & Conditions Apply



9,000L SHED TANK & PUMP PACKAGE

RT09000 SHEDPACK



WIN
BACK YOUR TANK!

1. Purchase your Tank between 1st June and the 31 August 2022.
2. Send us a Photo of the Tank Installed with the Purchase Receipt and a Picture of the Serial Number.
3. Email your entry to marketing@rapidplas.com.au
 - Entries Close 31st October
 - Winner Drawn and Notified by end of November 2022

Conditions:

- Prize value will be equal to the value of a single tank only and is applicable to Tanks up to 22,500 Litres.
- Apply's to Tanks purchased between 1/6/2022 & 31/8/2022.

What is Crown Force™ Technology?

Crown Force is a combination of a specially formulated blend, triangular beams and corrugated structural design in a single piece construction.

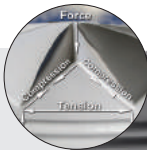
Crown Force™ Technology

The triangular beams interlock into the proven corrugated wall profile providing optimal strength.



Triangular Beams

The ultimate design for strength and durability.



Crown Force tanks are moulded as a single piece. No seams or joins.

The Crown Force design allows the tank to breathe, expanding and contracting with changes to temperature and pressure when in use to prevent cracking and roof sinking.



RBlend20

Formulated uniquely to interact with the heating and moulding process to enhance molecular stability and UV protection.



Every Tank Tested

Exceeding Australian standards



Crown Force™ Tanks Include:



Outlets
2 × 1 1/2" outlets fitted as standard at 3 & 9 o'clock.



Strainer & Cover
Mosquito proof stainless steel Inlet strainer and strainer cover to help prevent algae growth.



Lifting Lugs
4 × Moulded lugs for safe handling & moving into place.



Overflow
90mm overflow that can be fitted anywhere around the tank (supplied unfitted).



1 × 1/2" Ball Valve
So your tank is ready for use

or visit rapidplas.com.au



WHICH CROWN FORCE TANK FOR YOU?



IN YOUR GARDEN

4,700L LOW PROFILE SMALL GARDEN PACKAGE

This package provides enough pressure to run a few garden taps, hoses and sprinklers.

INCLUDES

- 1 × Rainwater Tank (your choice of colour)
- 90mm overflow kit
- Quick connection kit between your tank
- 50L/m pump
- Matching pump cover
- 2 outlets
- Strainer & strainer cover
- 1 1/2" Ball Valve

Package also available in tank sizes 1100L to 32,000L in both round and slimline styles.

\$2,445

RT09000 SHEDPACK

ON YOUR SHED

9,000L SHED TANK & PUMP PACKAGE

Make the most of the water you catch from your shed. If you're buying a new shed or you've already got a shed but don't have a tank on it, then this is the package you need.

INCLUDES

- 1 × 9000L Rainwater Tank (your choice of colour)
- 90mm overflow kit
- Quick connection kit between your tank & pump
- 50L/m pump
- Matching pump cover
- 2 outlets
- Strainer & strainer cover

FOR YOUR WHOLE HOUSE

27,000L WHOLE HOUSE PACKAGE

This packages includes a pump with enough pressure to run your whole house including kitchen, bathroom, laundry and toilets.

Package also available in tank sizes 7,000L to 32,000L*

INCLUDES

- 1 × Rainwater Tank (your choice of tank size)
- 90mm overflow kit
- Quick connection kit between your tank & pump
- 100L/m pump
- Matching pump cover
- 2 outlets
- Strainer & strainer cover

Life at Its Best®



OFF MAINS PACKAGES



\$7,400
OMSPACK

PACKAGE INCLUDES:
2 x 22,500L Rainwater Tank Plus

45,000L Off Mains Single Filter Package

45,000L Off Mains Single Filter Package

Enjoy purified water with this GOOD & SAFE package. 45,000L of water supply with a large pump to run your whole house and a single water filter system providing peace-of-mind throughout the house. Reducing taste, odour, chemicals and sediment in your water. This System protects and prolongs life of appliances throughout your home.

INCLUDES

- 2 x 22,500L rainwater tanks
- A tank joining kit to join your tanks so they fill together
- 90mm overflow kit with each tank
- Single water filter system complete with dual-purpose filter
- Quick connection kit between your tank and pump
- 100L/m Pump
- Matching pump cover to protect your pump
- A tank dial gauge level indicator
- 2 outlets on each tank
- Stainless steel strainer & dust cover to help prevent algae

54,000L Off Mains Double Filter Package

Enjoy dual filtered water with this BETTER & SAFER package. 54,000L of water supply with a large pump to run your whole house and a dual water filtration system for longer life. This system is the appropriate choice for providing safe, clean and healthy water throughout the house. Ensure that your home is free of sludge and sediment. This system also removes chlorine, bad taste and odours.

INCLUDES

- 2 x 27,000L rainwater tanks
- A tank joining kit to join your tanks so they fill together
- 90mm overflow kit with each tank
- Dual water filter system for safe, clean and healthy water
- Quick connection kit between your tank and pump
- 100L/m Pump
- Matching pump cover to protect your pump
- A tank dial gauge level indicator
- 2 outlets on each tank
- Stainless steel strainer & dust cover to help prevent algae

\$9,600
OMDPACK

PACKAGE INCLUDES:
2 x 27,000L Rainwater Tank Plus

54,000L Off Mains Double Filter Package

or visit rapidplas.com.au



GET A TRUCK LOAD TO YOUR PROPERTY



SCAN HERE TO ENQUIRE

ASK US ABOUT A DEAL

email: sales@rapidplas.com.au



TANK & TROUGH COMBO PACK

SUITABLE FOR: CATTLE, SHEEP, GOATS



COOLER WATER

1/3 of the trough is shaded at all times keeping the water cooler.



COMPLETE SYSTEM

All-in-one stock watering point. Internal plumbing fitted and ready to hook up at the bottom.



CLEANER WATER

One of the easiest troughs to clean. Cleaner water means healthier stock.

\$9,140

FOR THE PAIR

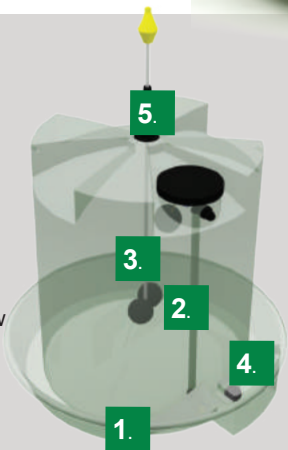
DP640

2 X 10,000L TANK & TROUGH COMBO

FREE BROOM

HOW DOES IT WORK?

1. Water enters the tank via Brass Inlet
2. Water flows up the internal pipework via the Poly Riser
3. Tank water level controlled via the High Pressure Float Valve at the top
4. Trough water level controlled via the Low Pressure Float Valve at the bottom
5. Level indicator rises as tank fills



SCAN TO VIEW THE COMBO VIDEO

COMBO TANK & TROUGH



Life at Its Best®

RAPIDPLAS PTY®

POLY WATER STORAGE & LIVESTOCK FEEDING SOLUTIONS

ARE YOU SET UP FOR TREATING FOOTROT?

FOOTROT BATH

SUITABLE FOR: SHEEP, GOATS

FEATURES

- Has an end to end linking feature that is ideal for placing in a sheep race
- Non slip ridges on floor open the hoof to increase chemical penetration
- Lightweight for easy handling and cleaning
- All poly, heavy duty, UV stabilised to withstand tough Australian conditions
- V-sides to prevent stock from removing their hooves from the chemical



\$356

DP508



SCAN HERE TO VIEW THE FOOTROT BATH

RACE TYPE

FOOTROT BATH

Length: 2400mm
Width: 480mm
Height: 200mm

MILK FEEDING CALFATERIA



TIPS FOR SUCCESSFUL CALF REARING

Calves will grow better when fed milk at a temperature of around 40°C. Calves don't thrive as well when fed cold milk as cold milk digestion requires more energy than warm milk digestion, which compromises energy for growing.

It is critical all calves receive colostrum within the first few hours of their birth. Calves which receive inadequate or no colostrum have higher mortality and lower growth rates.



SCAN HERE TO VIEW THE WHOLE RANGE



\$62

PCMB1

1 TEAT MILK BOTTLE WITH MILK MAID CALF TEAT

Capacity: 2 Litres



\$103

PCMM1C

1 TEAT MILK FEEDER WITH MILK MAID CALF TEAT

Capacity: 4 Litres



\$314

PCMM5C

5 TEAT MILK FEEDER WITH MILK MAID CALF TEATS

Capacity: 30 Litres

or visit rapidplas.com.au



\$32
PTSC2



2.5L FEED SCOOP
Dia: 165mm
Height: 300mm



\$79
PTSFB1GR

20L FEED BUCKET
Dia: 325mm
Height: 370mm



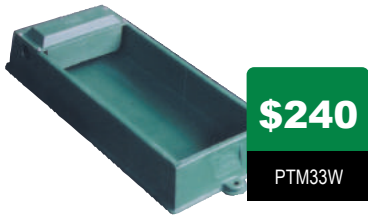
M SERIES FEED & WATER TROUGHS



\$210

PTM34W

35L M SERIES WATER TROUGH
Length: 840mm
Width: 570mm
Height: 180mm



\$240

PTM33W

60L M SERIES WATER TROUGH
Length: 1280mm
Width: 570mm
Height: 180mm



\$109

PTM34F

35L M SERIES FEED TROUGH
Length: 840mm
Width: 570mm
Height: 180mm



\$136

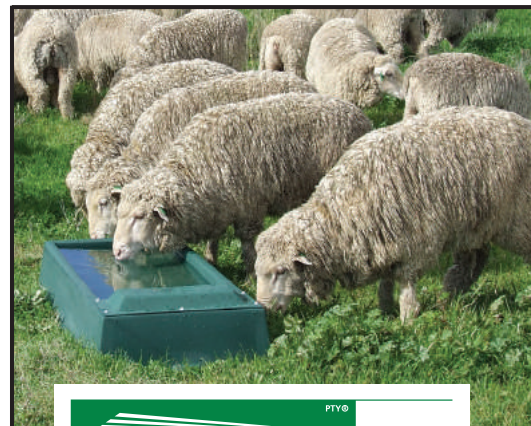
PTM33F

60L M SERIES FEED TROUGH
Length: 1280mm
Width: 570mm
Height: 180mm

Includes cover & 1/2" float valve



- M Series water troughs have the float covered to protect it from damage
- M Series troughs are a strong all-poly construction making them easy to handle and quick to set up
- Feature lugs to peg them down, preventing livestock pushing them around



RAPIDPLAS PTY®

POLY WATER STORAGE & LIVESTOCK FEEDING SOLUTIONS

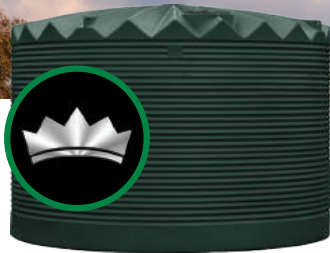
Life at Its Best®

SCAN HERE AND GET A QUOTE WITHIN 15 MINUTES

Go to rapidplas.com.au. Find the product/s you want to be quoted. **SUBMIT QUOTE REQUEST**



SCAN WITH MOBILE CAMERA



27,000L (6,000 GAL)

Dia: 3840mm
 Inlet Height: 2505mm
 Overall Height: 2700mm
 Outlet Size: 1½"
 Strainer: 500mm
 RTC27000



22,500L (5000 GAL)

Dia: 3510mm
 Inlet Height: 2505mm
 Overall Height: 2750mm
 Outlet Size: 1½"
 Strainer: 500mm
 RTC22500



22,500L LOW PROFILE (5000 GAL)

Dia: 3840mm
 Inlet Height: 2140mm
 Overall Height: 2350mm
 Outlet Size: 1½"
 Strainer: 500mm
 RTC22500LP



14,000L (3080 GAL)

Dia: 3000mm
 Inlet Height: 2150mm
 Overall Height: 2420mm
 Outlet Size: 1½"
 Strainer: 500mm
 RTC13500



10,000L (2200 GAL)

Dia: 2520mm
 Inlet Height: 2260mm
 Overall Height: 2450mm
 Outlet Size: 1½"
 Strainer: 500mm
 RTC10500



9,000L (1980 GAL)

Dia: 2350mm
 Inlet Height: 2220mm
 Overall Height: 2430mm
 Outlet Size: 1½"
 Strainer: 500mm
 RTC09000

FREIGHT FREE TO SITE

GO ONLINE FOR SMALL AND SLIMLINE TANKS



LARGE TANK SIZES

Freight Free for Tanks 9000lts and above. Excludes areas north of the Bundaberg, Monto, Roma, Dirranbandi axis and areas west of the Mungindi, Walgett, Nyngan, Hillston, Hay, Deniliquin axis. Subject to Rapid Plas Terms & Conditions available upon request. Not to be used in conjunction with any other offer. OFFERS VALID TILL 31ST AUGUST 2022

